



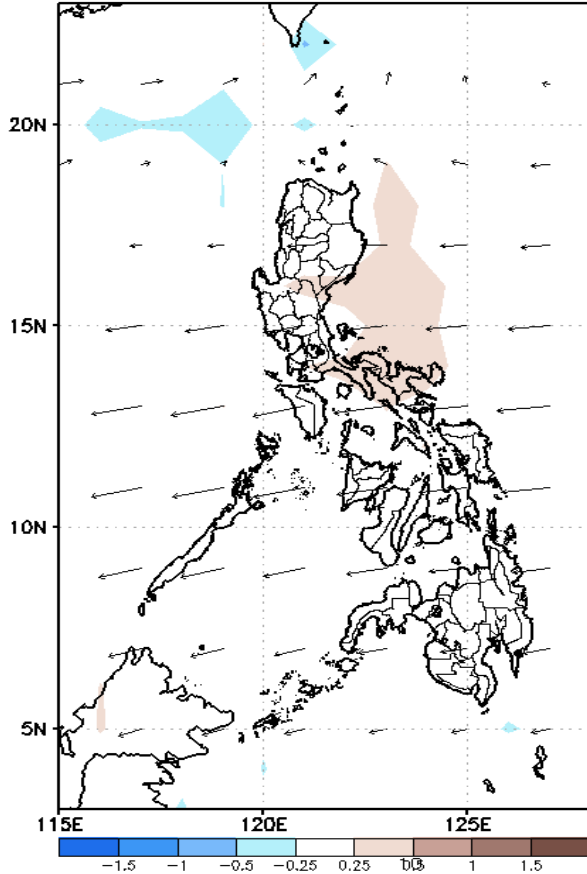
Week 1 & Week 2 Forecast for the Philippines using GEFS Model



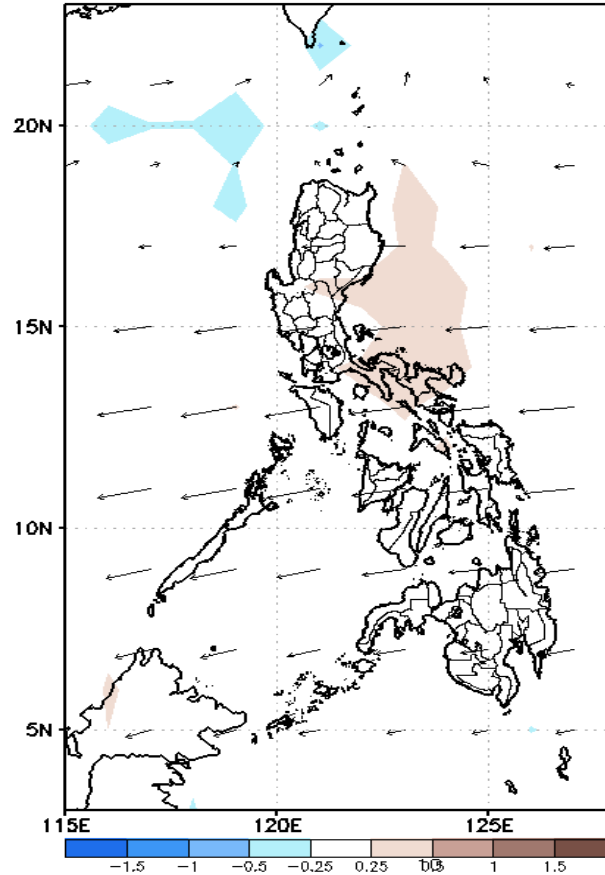
GEFS Week-1 Forecasts: Divergence & Wind Anomaly

Week 1: Sep 13-19, 2021

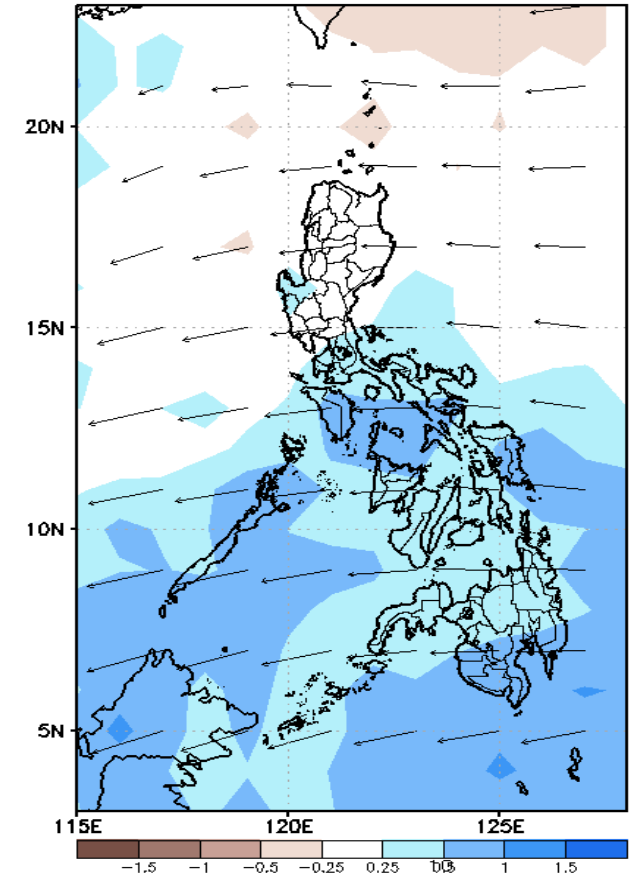
GEFS Week-1 850-hPa Divergence and Wind Anom
Valid: 20210913 - 20210919



GEFS Week-1 700-hPa Divergence and Wind Anom
Valid: 20210913 - 20210919



GEFS Week-1 200-hPa Divergence and Wind Anom
Valid: 20210913 - 20210919



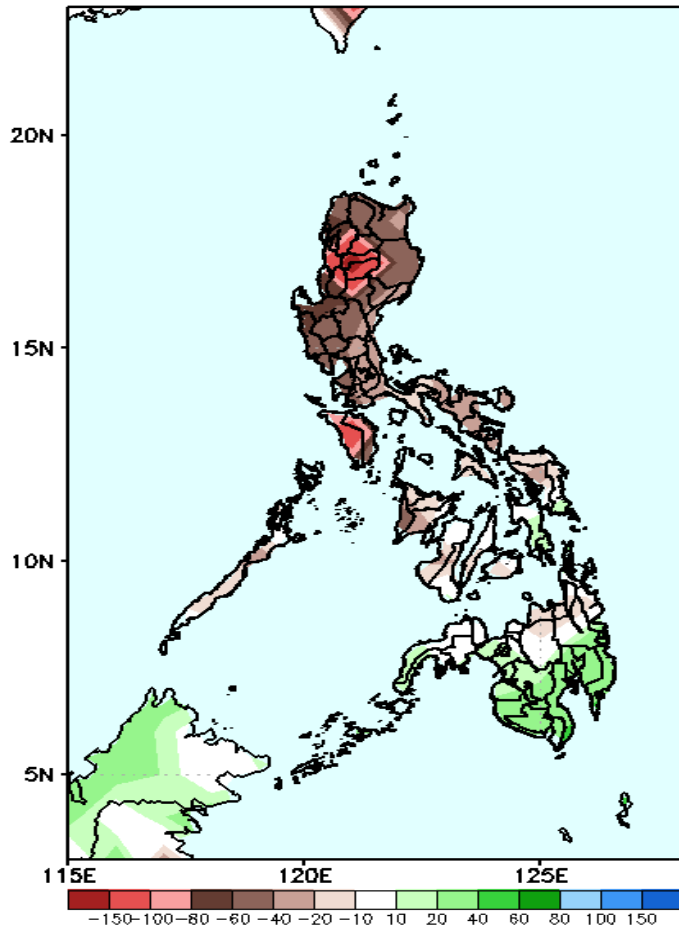
Upper and low level Divergence suggest likelihood of precipitation in most parts of Southern Luzon, Visayas and Mindanao. Easterlies affecting most parts of the country attributing to light and moderate rains due to thunderstorms during the forecast.



Precipitation Anomaly and Exceedance Probability > 25/50 mm

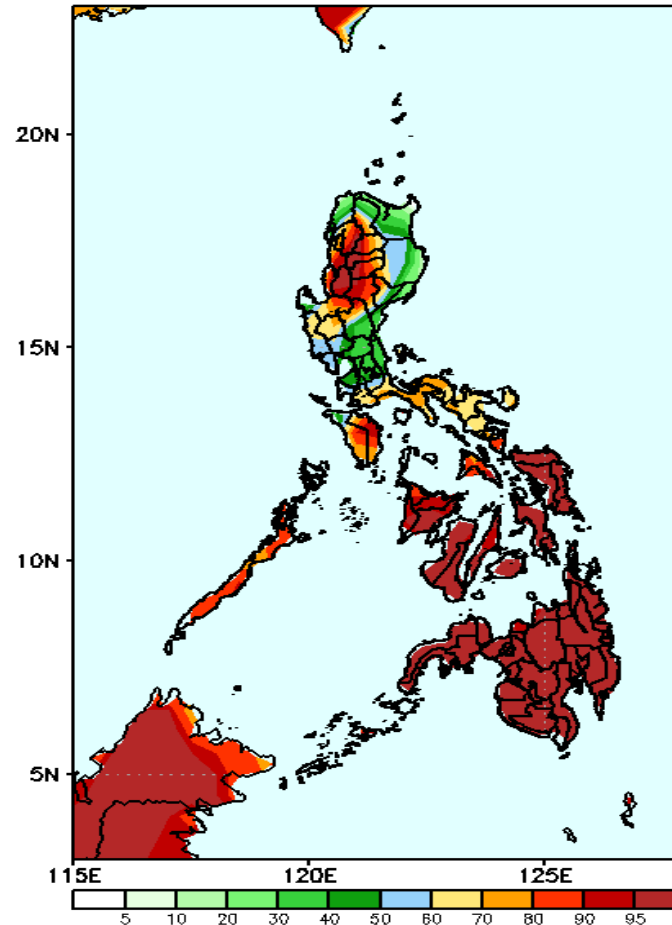
Week 1: Sep 13-19, 2021

GEFS Week-1 Precip Anomaly
Valid: 20210913 - 20210919



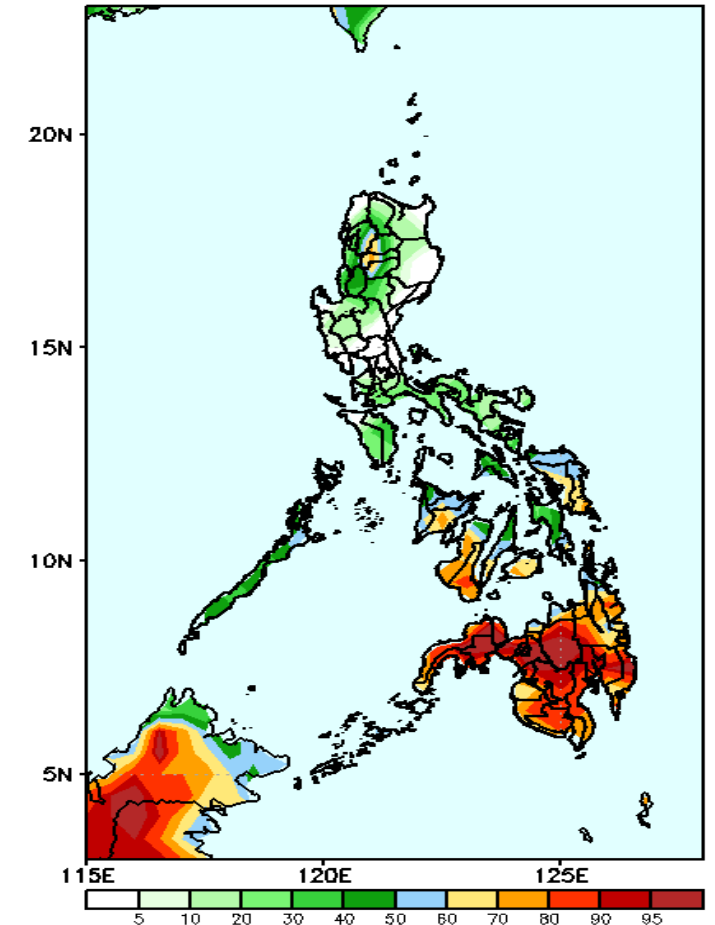
Rainfall deficit of up to 150mm is expected in Cordillera Region, Ilocos Sur & Mindoro and 40-80mm for the rest of Luzon and Visayas while 20-60mm increase of rainfall in southern Mindanao during the forecast period.

GEFS Week-1 Exceedance Prob. > 25mm
Valid: 20210913 - 20210919



High probability of rainfall to exceed 25mm in most parts of the country is expected except in Ilocos Norte, Apayao, Cagayan, Isabela, and Central Luzon during the forecast period.

GEFS Week-1 Exceedance Prob. > 50mm
Valid: 20210913 - 20210919

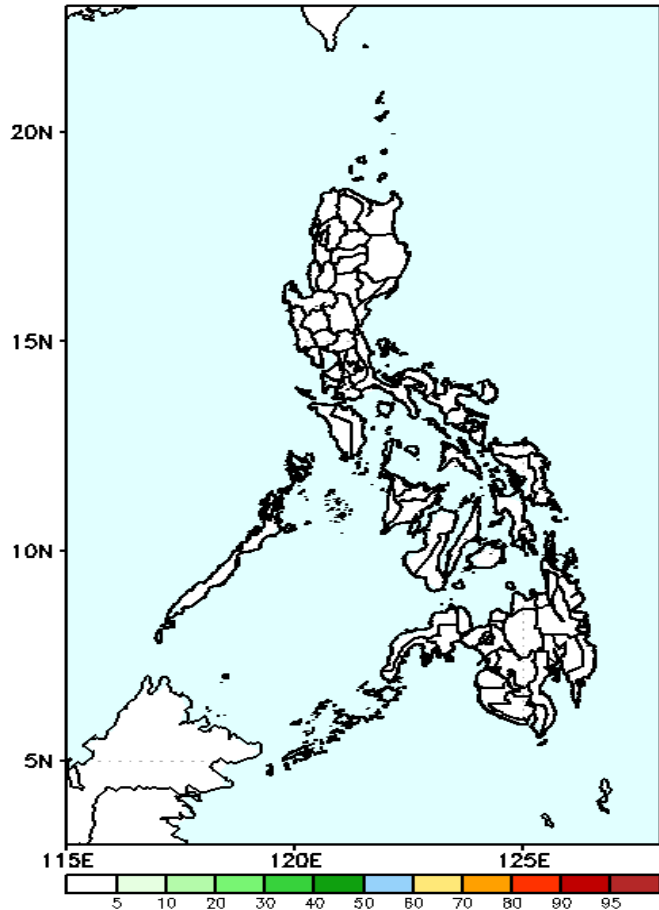


High probability of rainfall to exceed 50mm in most parts of western Visayas and Mindanao while less likely in Luzon and the rest of Visayas during the forecast period.

Exceedance Probability > 100/150/200 mm

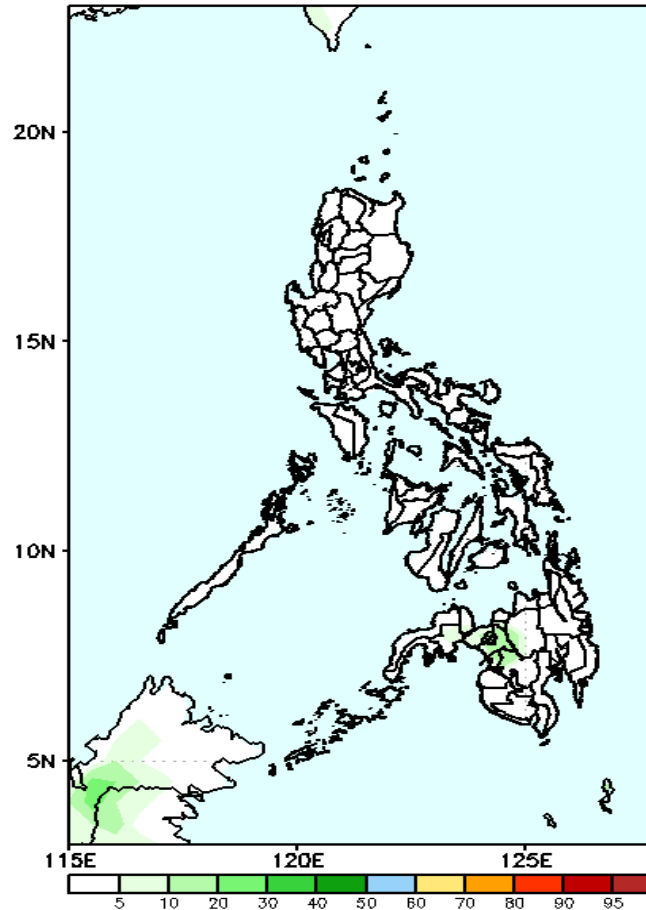
Week 1: Sep 13-19, 2021

GEFS Week-1 Exceedance Prob. > 200mm
Valid: 20210913 - 20210919



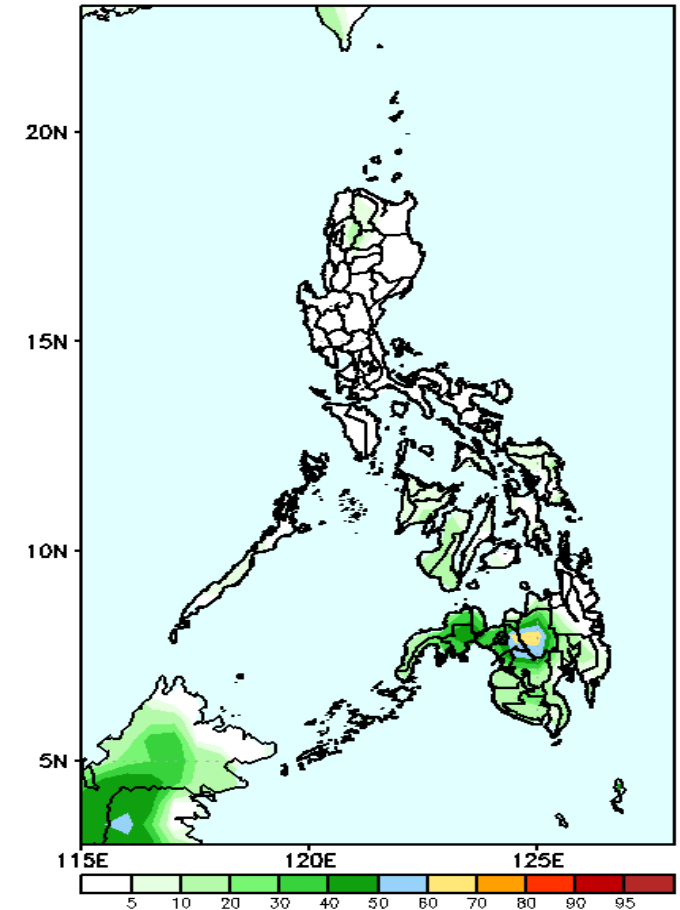
Less probability of rainfall to exceed 100mm in most parts of the country is expected during the forecast period.

GEFS Week-1 Exceedance Prob. > 150mm
Valid: 20210913 - 20210919



Less probability of rainfall to exceed 150mm in most parts of the country is expected during the forecast period.

GEFS Week-1 Exceedance Prob. > 100mm
Valid: 20210913 - 20210919



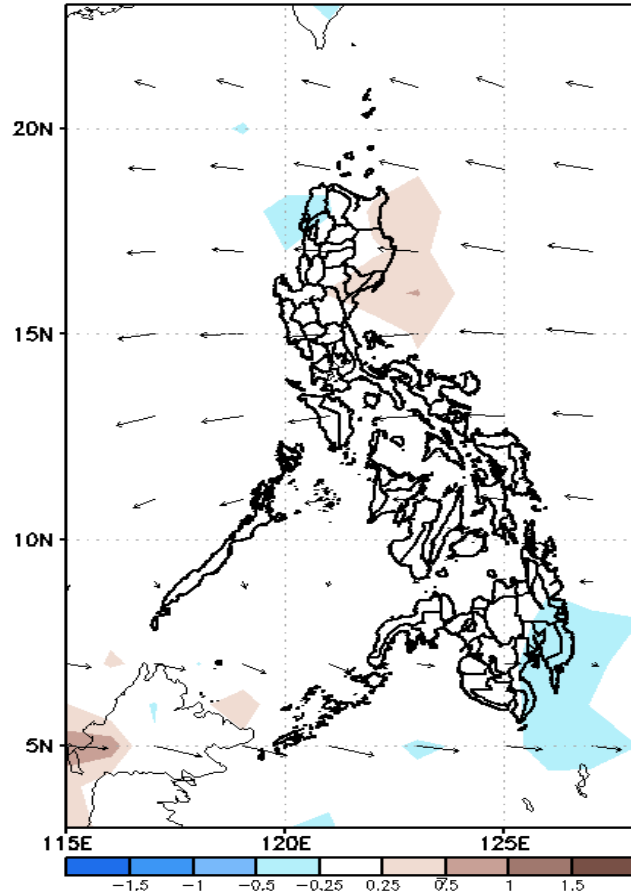
Less probability of rainfall to exceed 200mm in most parts of the country is expected during the forecast period.



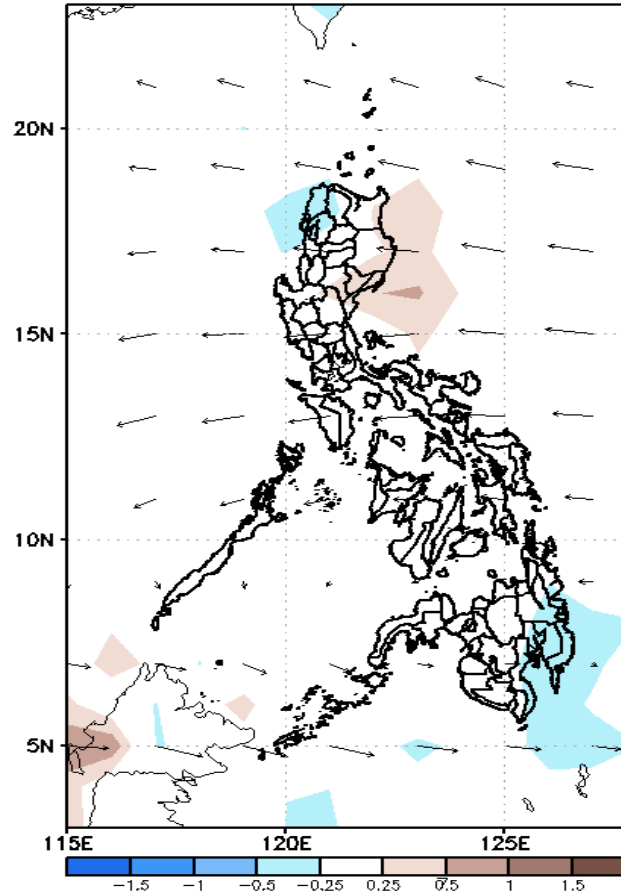
GEFS Week-2 Forecasts: Divergence & Wind Anomaly

Week 2: Sep 19-26, 2021

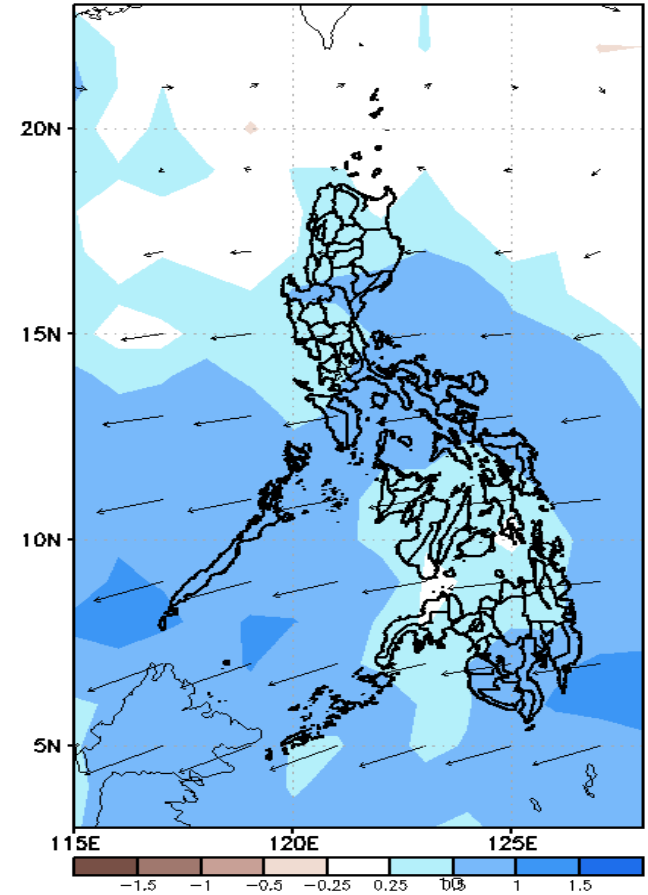
GEFS Week-2 850-hPa Divergence and Wind Anom
Valid: 20210920 - 20210926



GEFS Week-2 700-hPa Divergence and Wind Anom
Valid: 20210920 - 20210926



GEFS week-2 200-hPa Divergence and Wind Anom
Valid: 20210920 - 20210926

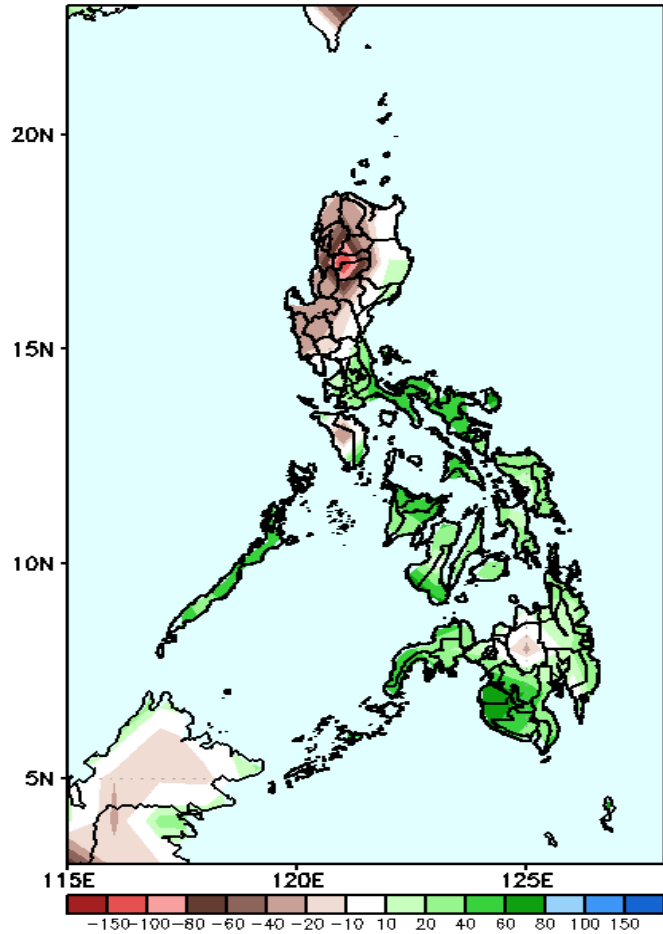


Upper and low level Divergence suggest likelihood of precipitation in most parts of the country. Southwest monsoon affecting some parts of western Visayas and Luzon while Easterlies affecting most parts of the country attributing to light and moderate rains due to thunderstorms during the forecast.

Precipitation Anomaly and Exceedance Probability > 25/50 mm

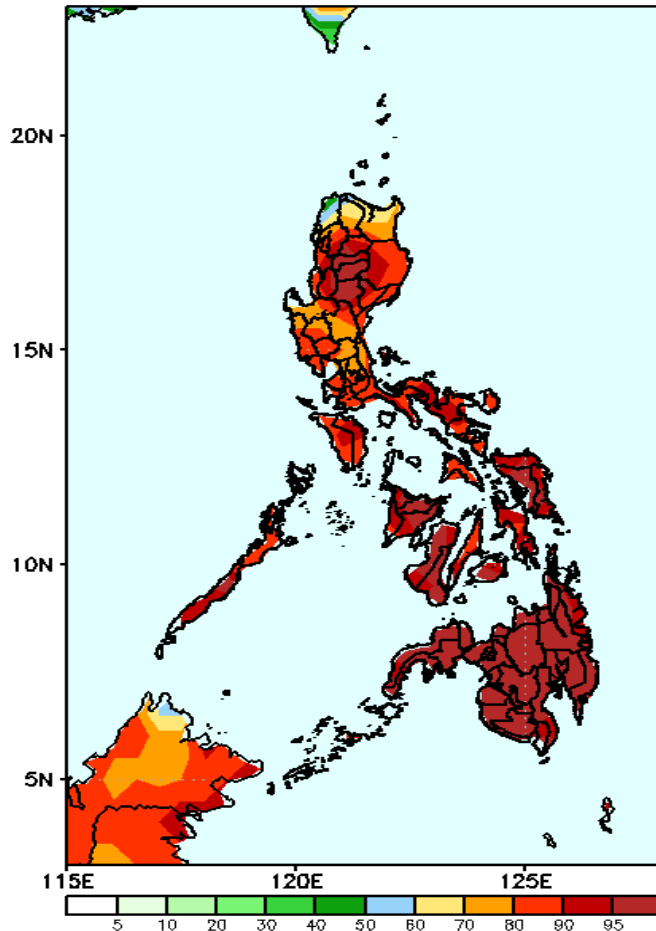
Week 2: Sep 20-26, 2021

GEFS Week-2 Precip Anomaly
Valid: 20210920 - 20210926



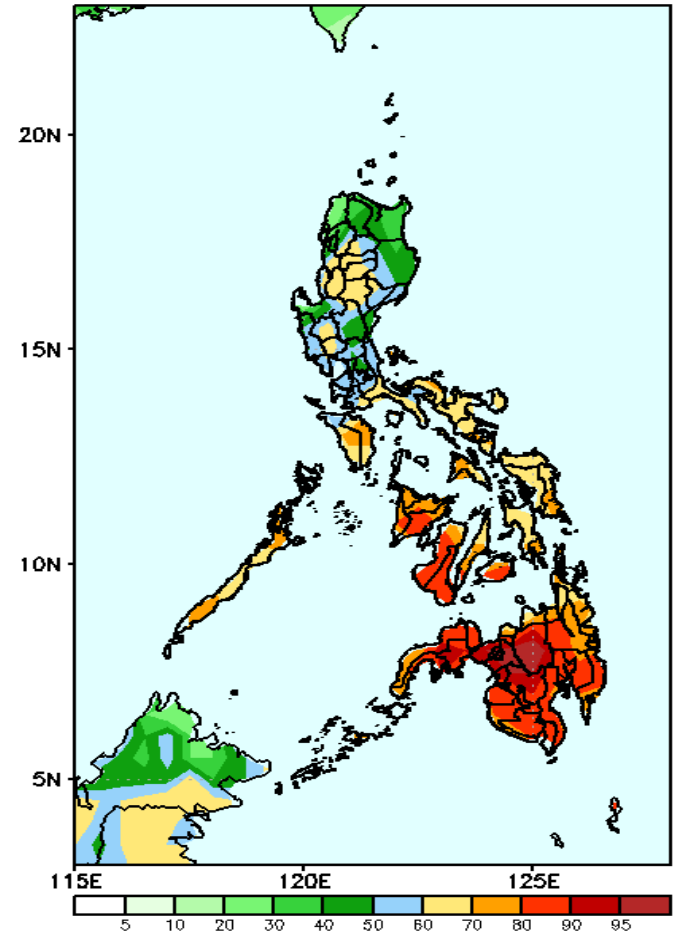
Increase of rainfall of 60-100mm is expected in most parts of the country except in Cordillera Region where 40-100mm rainfall deficit during the forecast period.

GEFS Week-2 Exceedance Prob. > 25mm
Valid: 20210920 - 20210926



High probability of rainfall to exceed 25mm in most parts of the country is expected during the forecast period

GEFS Week-2 Exceedance Prob. > 50mm
Valid: 20210920 - 20210926

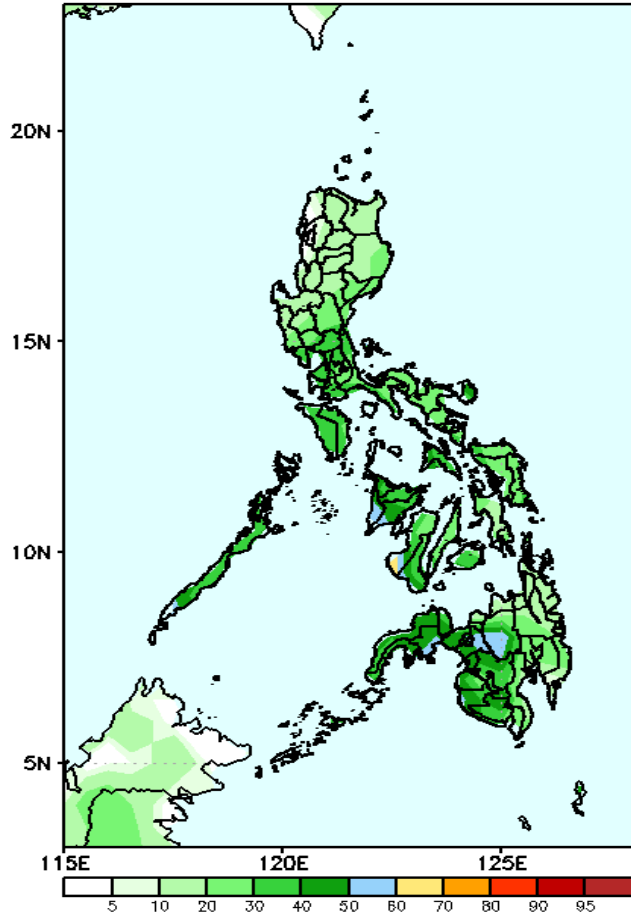


High probability of rainfall to exceed 50mm in most parts of Visayas and Mindanao while 40-70% chance in Luzon during the forecast period.

Exceedance Probability > 100/150/200 mm

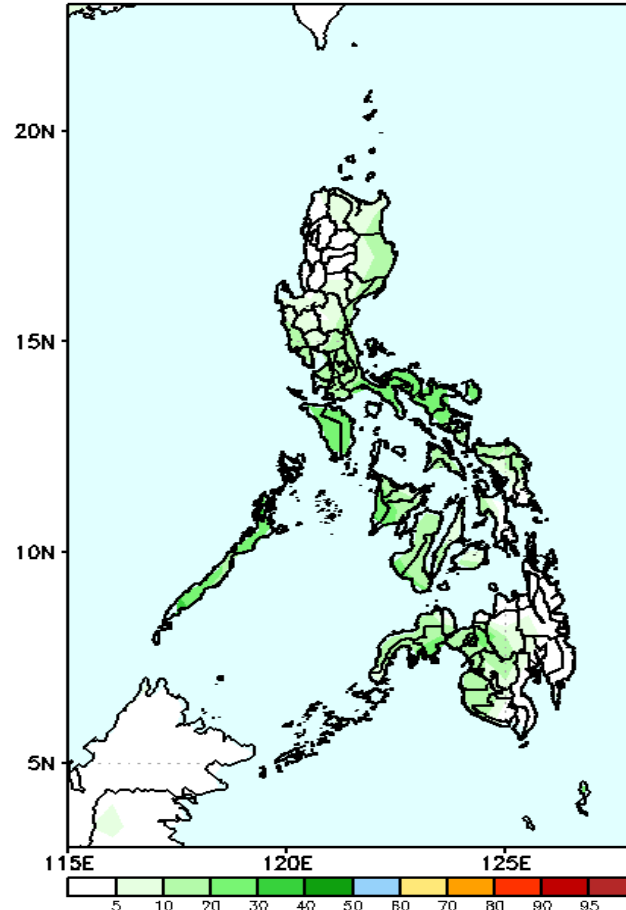
Week 2: Sep 20-26, 2021

GEFS Week-2 Exceedance Prob. > 100mm
Valid: 20210920 - 20210926



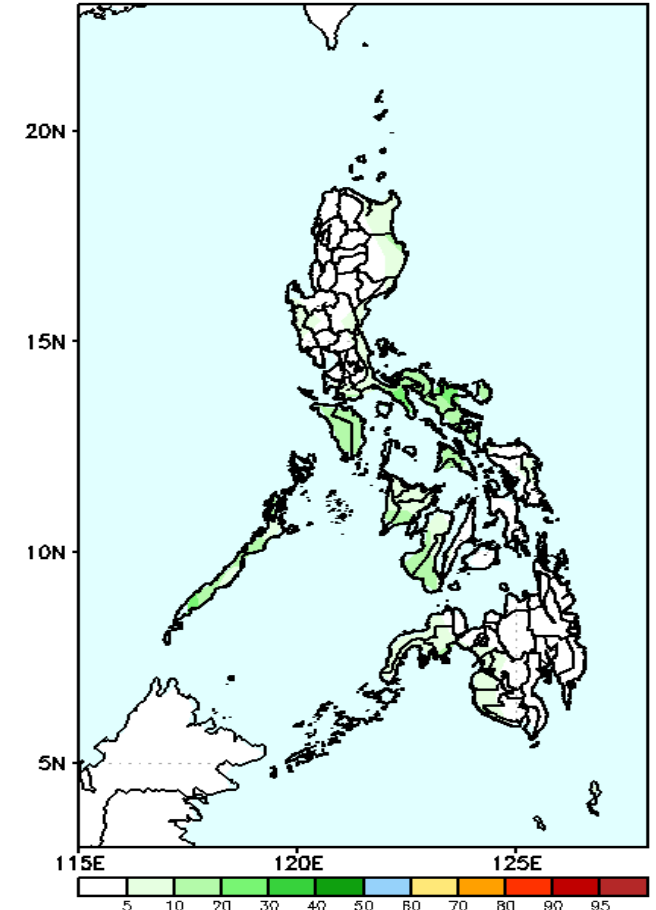
Less probability of rainfall to exceed 100mm in most parts of the country is expected during the forecast period.

GEFS Week-2 Exceedance Prob. > 150mm
Valid: 20210920 - 20210926



Less probability of rainfall to exceed 150mm in most parts of the country is expected during the forecast period.

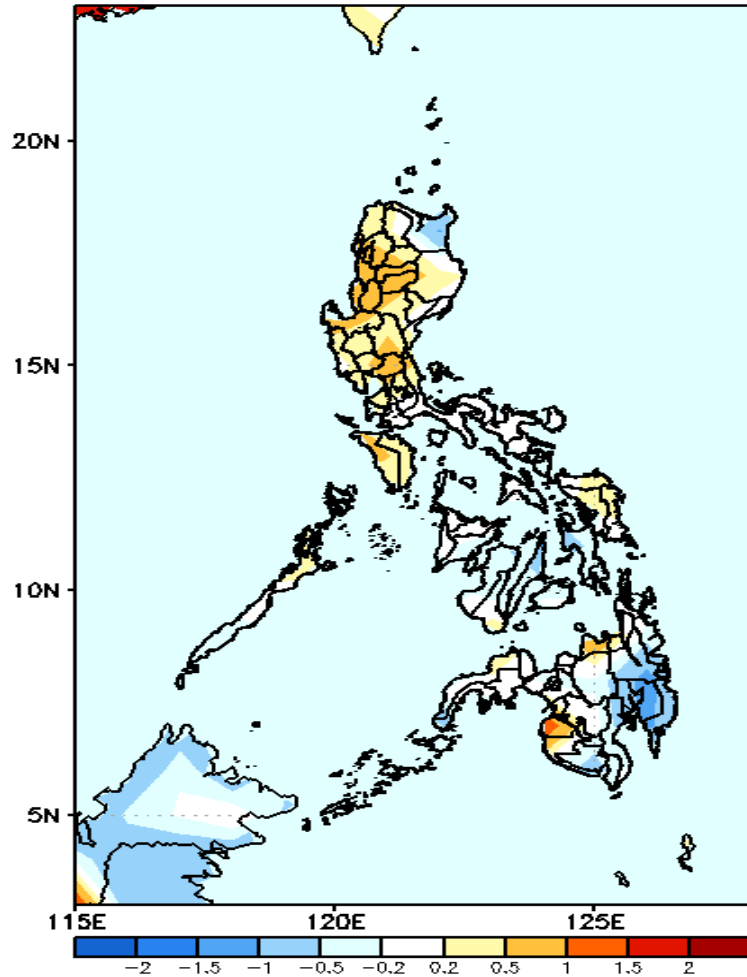
GEFS Week-2 Exceedance Prob. > 200mm
Valid: 20210920 - 20210926



Less probability of rainfall to exceed 200mm in most parts of the country is expected during the forecast period.

GEFS Week-1 & 2 Forecasts: T2m Anomaly

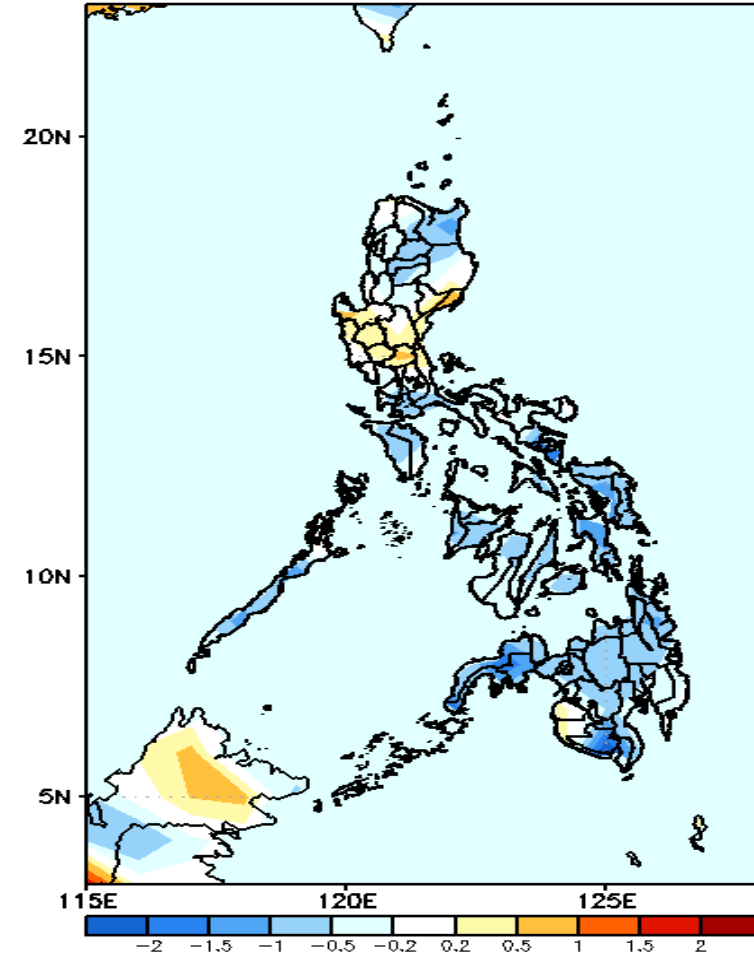
GEFS Week-1 T2m Anomaly
Valid: 20210913 - 20210919



2m Temperature Week 1: Sep 13-19, 2021

Average to slightly warmer than average surface air temperature will likely experience in most parts of the country except in Cagayan & Davao Region where cooler than average temperature is expected.

GEFS Week-2 T2m Anomaly
Valid: 20210920 - 20210926



2m Temperature Week 2: Sep 20-26, 2021

Average to slightly cooler than average surface air temperature will likely experience in most parts of the country except in Central Luzon where slightly warmer temperature is expected.

